



AO SCAN TECHNOLOGY

BY S  LEX

Setup Guide
Blackview 9100

AO Scan Technology by Solex, LLC

Setup Guide | Blackview 9100

Step 1.

Turn on the AO Scan Mobile Device.

The power button of the AO Scan Mobile is the second button down on the right side of the device.



Step 2.

Connect to a Wi-Fi Network.

Locate and click on the Settings app icon.

In the setting menu, scroll down and click on the 'Network & Internet' tab.

Click on the Wi-Fi option to select your network and enter your password.



Settings APP Icon



Step 3.

Access AO Scan Program.

On the home screen, locate and click on the AO Scan program icon.

When the AO Scan program opens, click on the sign in button.

Next, select AO Scan Mobile as your login provider.



AO Scan Program Icon



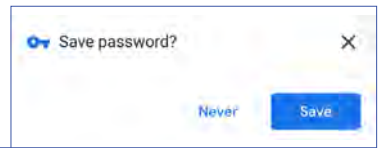
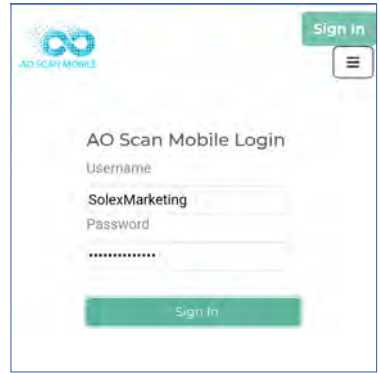
Step 4.

Provide Login Credentials.

On the AO Scan Mobile Login page, enter your username and password. Your login credentials will be the same as your Solex back office credentials.

The AO Scan Mobile will prompt you to save your login information.

Solex recommends allowing your device to save your login information for easier access to your AO Scan account.

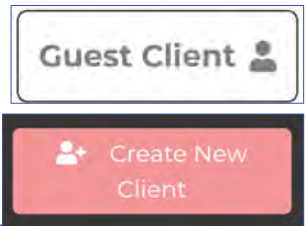


Step 5.

Setting Up a New AO Scan Profile.

On the AO Scan homepage, click on 'Guest Client' at the top of the screen. The AO Scan homepage is the page with the listed programs AO Scan Technology offers – Quick Scan, INNER-Voice, Vitals, Comprehensive, and SEFI.

Select 'Create New Client.'



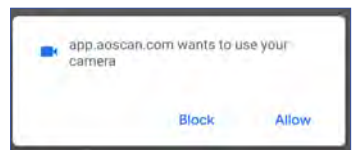
Step 6.

Provide Camera Access to AO Scan.

After selecting the 'Create New Client' button, you will be prompted to authorize AO Scan access to your camera.

Select 'Allow' to give Google Chrome access to your camera.

AO Scan requires Google Chrome to have camera access to accurately use the unique functions of the program and its technology.



Step 7.

Provide AO Scan Profile Information.

After selecting the 'Create New Client' button and granting camera access to the AO Scan program, you must enter the information requested on the client profile page.

First, enter your first name, last name, the email address where you want your scan results to be sent to, and gender. It is important to specify your gender for specific gender organs the scan analyzes.

Next, enter your weight, height (in inches), and birthdate.

In order to enter your birthdate, select the birthdate box field and a calendar widget will appear on your screen.

On the top-left corner of the calendar, click on the year to select your birthdate year and then click on 'Set' to save the year.

After selecting your birthdate year, select the month and date. Click on 'Set' to save the updates you've made.

The screenshot shows the 'Client Profile' form in the AO Scan Mobile app. At the top, there is a 'Guest Client' button with a user icon, a profile icon, and a menu icon. The form fields are: Name (First Name, Last Name), Email Address (Email Address), Gender (Male, Female), Weight (Weight), Height (Height), and Birth Date (02/26/2001). Below the form, there are 'Switch' and 'Upload' buttons, a camera icon, and a 'Next' button with a right arrow.

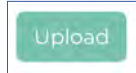
The screenshot shows a calendar widget for the year 2001. The date 'Mon, Feb 26' is displayed at the top. The calendar grid shows the days of the week (S, M, T, W, T, F, S) and the dates from 1 to 28. The date '26' is highlighted with a blue circle. At the bottom, there are 'CLEAR', 'CANCEL', and 'SET' buttons.

**Step 7.
cont.**

To finish setting up your account, you must add a profile photo. You can upload a photo you already have saved in your device by clicking the 'Upload' button.

If you prefer to take a new photo for your profile, you can press the camera view screen on the Client Profile page to take the photo. When taking your photo from the camera view screen, align yourself on the camera viewer to take a headshot photo. To capture the photo, press the camera view screen.

Before you submit your information, double check the information you provided is correct. Click the 'Next' button at the bottom of the screen to submit your information.

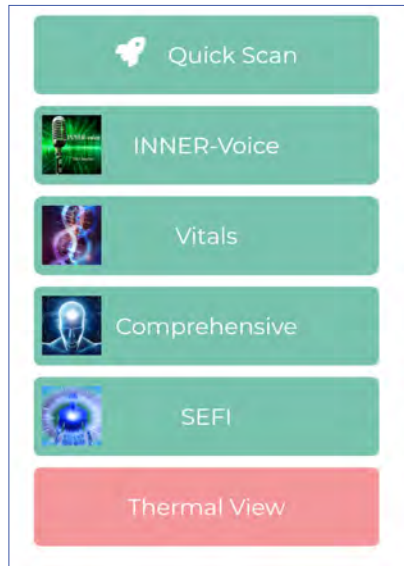


Step 8.

Provide Microphone Access to AO Scan.
AO Scan requires

Google Chrome to have microphone access to accurately use the unique functions of the program and its technology.

To grant microphone access to Google Chrome, go to the AO Scan homepage. The AO Scan homepage is the page with the listed programs AO Scan Technology offers – Quick Scan, INNER-Voice, Vitals, Comprehensive, and SEFI.

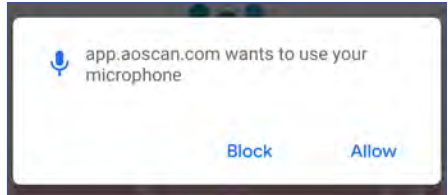


Step 8.
cont.

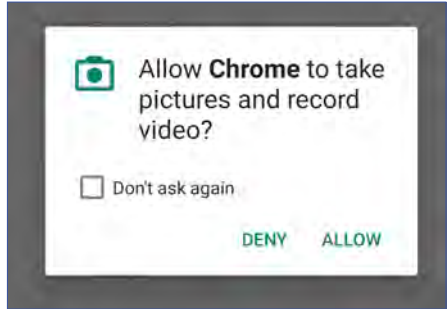
When you are on the AO Scan homepage click on the 'INNER-Voice' button.



Next, click on the 'Microphone' button at the top of the screen to be prompted to give Google Chrome access to your microphone.

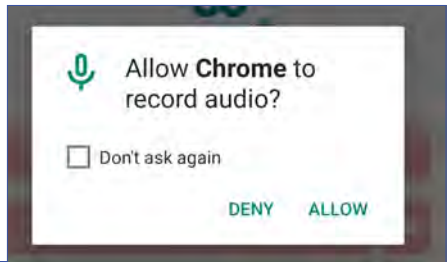


Select 'Allow' to give Google Chrome access to your microphone.



Select 'Allow' Chrome to take picture and record video?

Select 'Allow' Chrome to record audio?

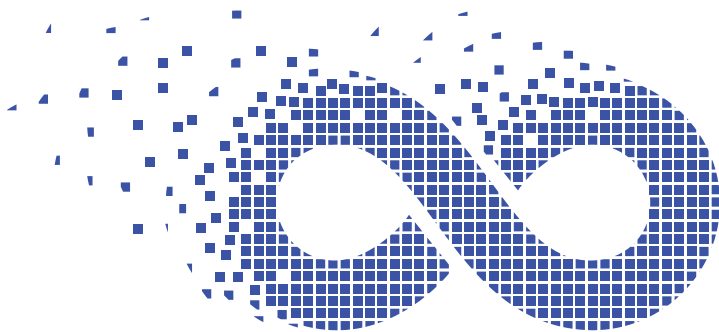
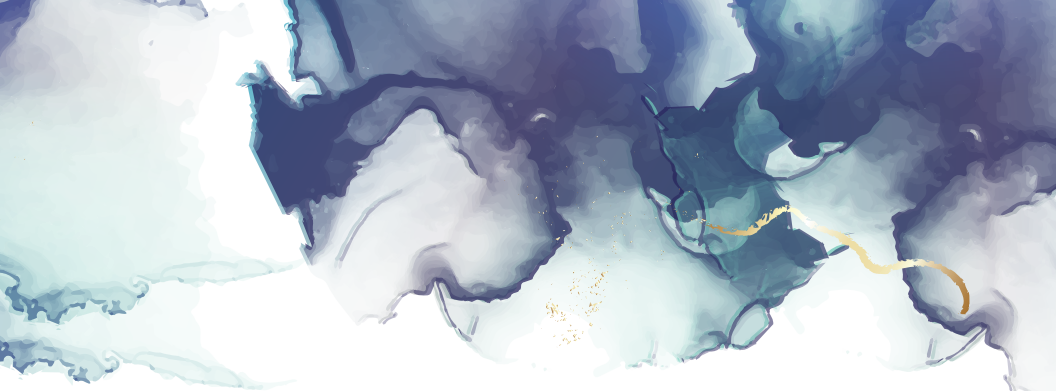


Step 9.

Your AO Scan Account is ready!

You have successfully created your AO Scan profile account. You are now ready to begin using the AO Scan program. Start mastering quantum living.

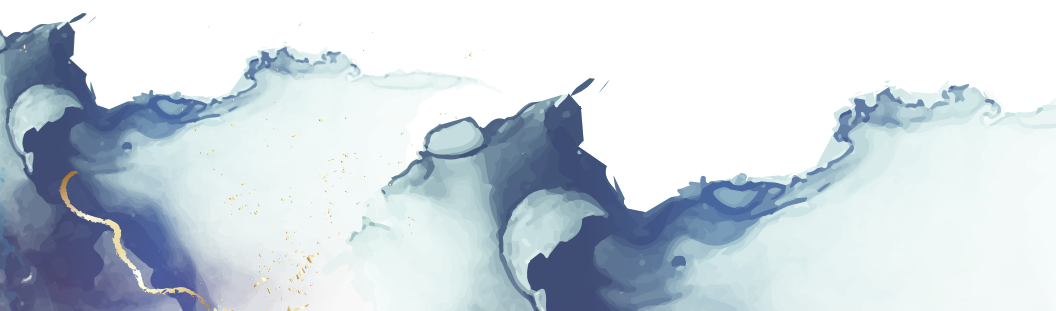


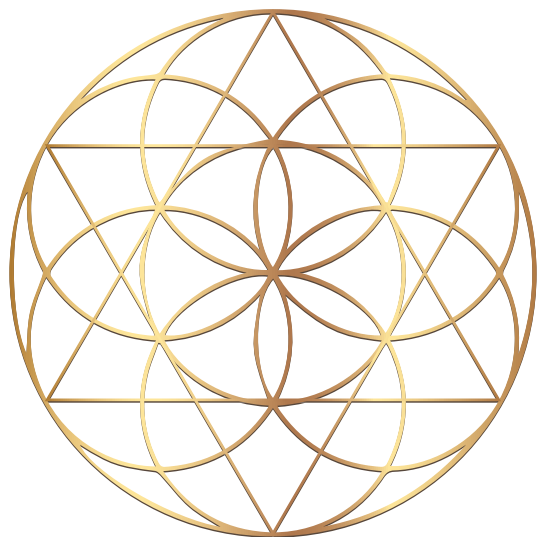


AO SCAN TECHNOLOGY

S  LEX

MASTER QUANTUM LIVING





SOLEX

MASTER QUANTUM LIVING

...and allow all experiences to be empowering.

© Solex, LLC